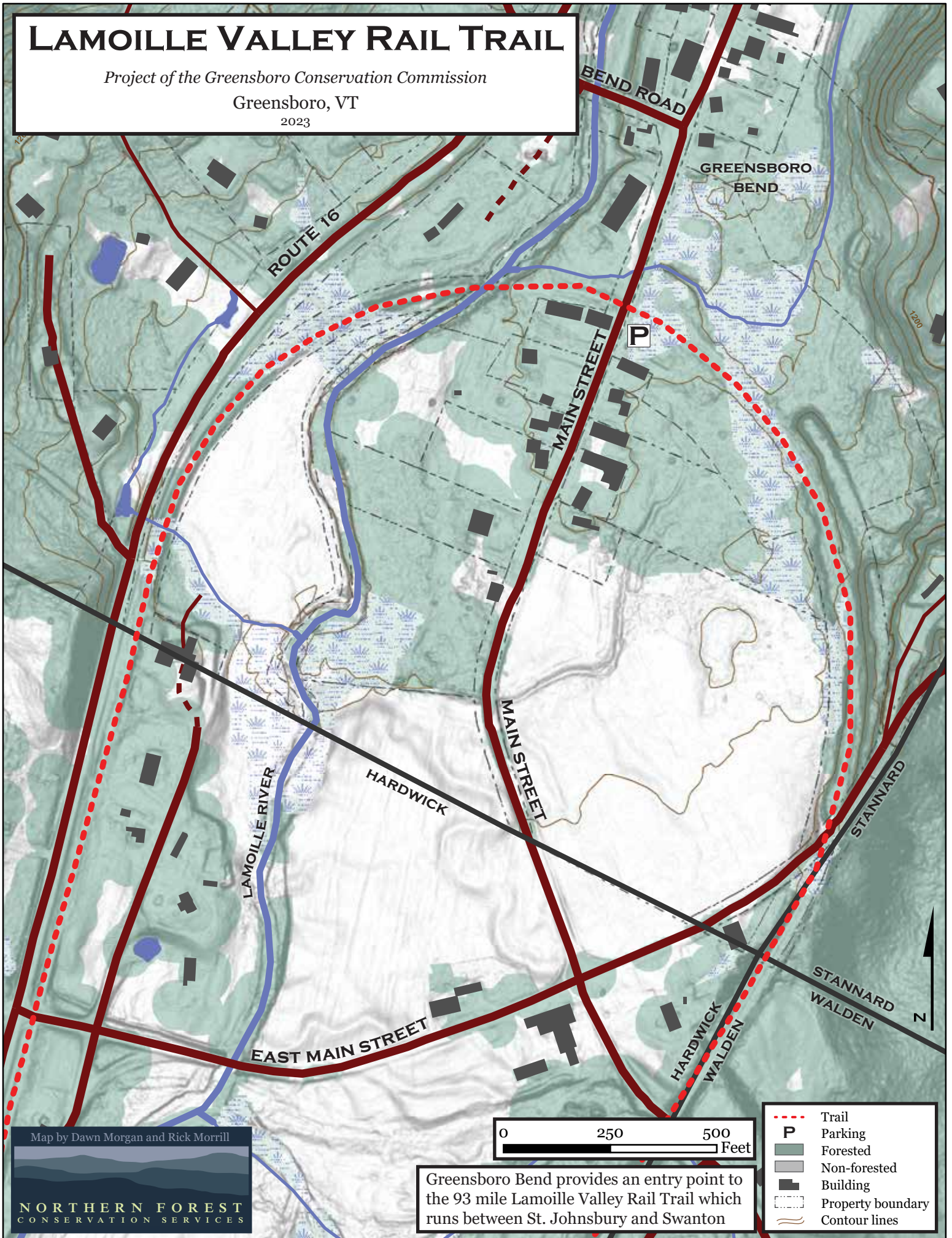


LAMOILLE VALLEY RAIL TRAIL

Project of the Greensboro Conservation Commission

Greensboro, VT

2023



Map by Dawn Morgan and Rick Morrill

NORTHERN FOREST
CONSERVATION SERVICES

0 250 500
Feet

Greensboro Bend provides an entry point to the 93 mile Lamoille Valley Rail Trail which runs between St. Johnsbury and Swanton

- Trail
- Parking
- Forested
- Non-forested
- Building
- Property boundary
- Contour lines